



LUND UNIVERSITY  
Faculty of Medicine

# Invitation for the workshop

## IMPLEMENTATION OF V/P SPECT

ACCORDING TO EUROPEAN GUIDELINES

MARCH 1 – 4, 2016



**The Workshop is granted by 11 European CME credits (ECMEC) by the European Accreditation Council for Continuing Medical Education (EACCME).**

**Location:** Skåne University Hospital in Lund, Sweden  
**Course management:** Assoc. Professor Marika Bajc, [marika.bajc@med.lu.se](mailto:marika.bajc@med.lu.se)  
**Contact person:** Secretary Kerstin Brauer, [kerstin.brauer@med.lu.se](mailto:kerstin.brauer@med.lu.se)  
 Department of Clinical Physiology, Skåne University Hospital,  
 S-221 85 LUND, Sweden, fax number + 46 46 15 17 69

### Program:

#### Day 1

##### Lectures

Starting at noon

##### Pulmonary embolism

1) Importance of assessment clinical probability

##### Diagnostics imaging of pulmonary embolism

2) Multi-slice CT – how to do it – strengths and limitations  
 3) V/P SPECT – how to perform

WELCOME GET-TOGETHER

#### Day 2

##### Lectures and exercises

##### How to use Technegas

**Clinical implementation** of V/P SPECT for pulmonary embolism according to the European Guidelines

Interactive session

LUNCH

**Clinical procedure** of the patients with suspected pulmonary embolism following the whole clinical protocol

**Interpretation** of V/P SPECT, cases with writing the reports

#### Day 3

##### Lectures and exercises

##### Alternative diagnoses

**The possible role of hybrid V/P SPECT CT**

**Assessment of function and grading of COPD**

LUNCH

**Clinical procedure** of the patients with suspected pulmonary embolism following the whole clinical protocol

**Interpretation** of V/P SPECT cases with writing the reports

DINNER

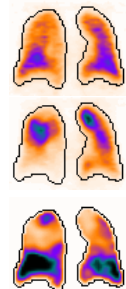
#### Day 4

##### Discussion

**Algorithm** for diagnosis of pulmonary embolism

**Difficult cases,** demonstration and discussion

**General discussion**



**Number of participants:** 12 – 16

**Teachers:** Marika Bajc; Massimo Miniati, Professor Florence; Björn Jonson, Professor Lund; Ralf Bauer, Professor Frankfurt; Björn Altmann, General Manager, Cyclomedica Germany

**Target group:** Physicians, biomedical technicians, medical physicists  
 Different occupational categories are very welcome from the same hospital.

**Accommodation:** List of hotels will be sent in another file after registration.

**Other:** The course starts at noon on Tuesday, March 1<sup>st</sup> and ends on Friday, 4<sup>th</sup> March, at 12:30 pm with optional extension for the afternoon. Evening activities on Tuesday and Thursday are included.

**Fee:** 600 Euro (excluding VAT) incl. lunch, coffee and evening activities. The course fee will be invoiced after notification.

**Notification:** Registration form and course invitation is found at:  
[http://www.med.lu.se/klinvetlund/klinisk\\_fysiologi/kurser](http://www.med.lu.se/klinvetlund/klinisk_fysiologi/kurser)

The course is organized in collaboration between Lund University, Skåne University Hospital and the Swedish Association of Nuclear Medicine.