

## VENUE AND PRICING

### DATE

October 2nd and 3rd 2014

### VENUE

London

### PRICE

Consultants: £525

Registrars: £450

### HOW TO BOOK:

You can book a place on this course via one of the following options:

**Email:** [briony@jcaseminars.com](mailto:briony@jcaseminars.com)  
[jane@jcaseminars.com](mailto:jane@jcaseminars.com)

**Phone:** 01485 210687  
07904122834

**Website:** [www.jcaseminars.com](http://www.jcaseminars.com)



JCA Medical Seminars Limited create inspirational training courses for CPD credits for medical personnel throughout the UK.

Find some out about our other courses at [www.jcaseminars.com](http://www.jcaseminars.com)

## QUOTES FROM OUR SEMINAR APPRAISAL FORMS

*'Excellent speakers... very informative... a most enjoyable day.'*

*'I enjoyed the opportunity to interact with the speakers, the participants were energetic, enthusiastic and good to meet them.'*

*'Good information when booking, well organised, good food, good welcome, good lectures.'*

*'Difficult subjects delivered in a beautiful manner.'*

*'Organisers were so helpful and friendly and created a fantastic atmosphere.'*

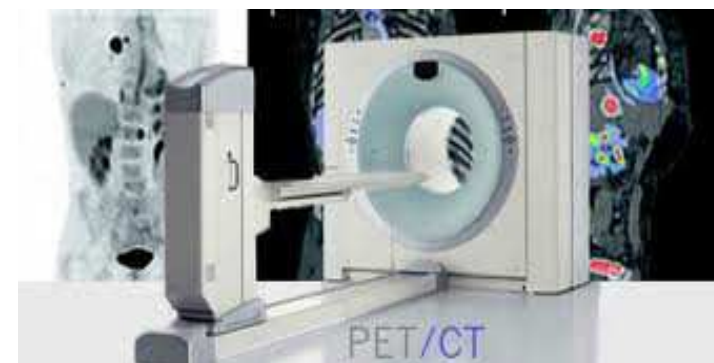
*'Brilliant speakers, good to hear such experts.'*



*Dreams are the seeds of change. Nothing ever grows without a seed, and nothing ever changes without a dream.*



## CT ESSENTIALS FOR HYBRID IMAGING



**OCTOBER  
2nd and 3rd  
2014**

# HYBRID IMAGING COURSE



## TARGET AUDIENCE:

This course is aimed for nuclear medicine physicians reporting hybrid SPECT-CT and PET-CT who would like to improve their knowledge of CT. The focus will be on bone CT for the reporting of musculoskeletal SPECT-CT and on common CT findings in the oncology setting for the reporting of oncology PET-CT.

Basic CT knowledge assumed for the course.

## OBJECTIVES:

- To be able to recognize and describe common CT abnormalities, list differential diagnoses and recommend second-line investigations.
- To be able to incorporate CT findings in a clinically integrated hybrid imaging report.

# COURSE PROGRAMME



## Day 1

Welcome , Registration and Introduction

### Lectures

#### **Musculoskeletal: Spine and Metalwork**

Dr Marko Berovic  
Consultant Radiologist  
Whittington Hospital

#### **Thorax**

Dr Charlotte Cash  
Consultant Radiologist  
Royal Free Hospital

#### **Liver**

Dr Lee Grant  
Consultant Radiologist  
Royal Free Hospital

#### **Abdomen and Pelvis**

Dr Dylan Tsukagoshi  
Consultant Radiologist  
Royal Free Hospital

**12 CPD credits will be awarded for the two days on this course**

**Accredited by the Royal College of Radiographers**

## Day 2

Welcome and Registration

### Lectures

#### **Head and Neck**

Dr. Zarni Win  
Consultant Radiologist and Nuclear Medicine Physician  
Charing Cross Hospital

#### **Musculoskeletal: Hip and Knee Prostheses and Extremities**

Dr Malavika Nathan  
Consultant Radiologist and Nuclear Medicine Physician  
Royal Free Hospital

#### **How Not To Kill Your Patient**

Dr Thomas Wagner  
Consultant in Nuclear Medicine  
Royal Free Hospital

#### **Management of Incidental Findings**

Dr Malavika Nathan  
Consultant Radiologist and Nuclear Medicine Physician  
Royal Free Hospital

**Quick Quiz of the Course followed by presentation of Certificates**



# SPEAKERS BIOGRAPHIES

## CLINICAL LEAD: THOMAS WAGNER



"I am a consultant in nuclear medicine at the Royal Free London. I trained in France at the Toulouse University Hospital where I did a fellowship in PET-CT and neurological nuclear medicine imaging. I have a special interest in oncological, inflammatory diseases and neurological applications of PET-CT and in SPECT-CT."

## CHARLOTTE CASH

"Consultant radiologist at Royal Free London NHS Trust for 10 years with specialist interest in thoracic and infectious diseases imaging."

## ZARNI WIN

"Consultant Radiologist and Nuclear Medicine Physician at Imperial College Healthcare NHS Trust specialising in Dementia PET (scanning the first ever Amyvid PET in the UK) and head and neck PET. He runs the radionuclide therapy service for benign thyroid conditions. His radiology subspecialties are paediatric and endocrine radiology. He also runs several courses - The Essential Radiology for Junior Doctor course; The Imperial NM for FRCR course; and The Hammersmith Radiology ST1 Interview Courses"

## DYLAN TSUKAGOSHI

"My interests are breast and oncological imaging particularly specialising in CT cross-sectional imaging. I practice at the Royal Free."